



## On The Edge

17<sup>th</sup>-21<sup>st</sup> May 2011

Private View: Thursday 19<sup>th</sup> May 2011, 6pm-9pm  
ELEVEN AND A HALF at A&D Gallery, 51 Chiltern St, London, W1

# Ben Catt

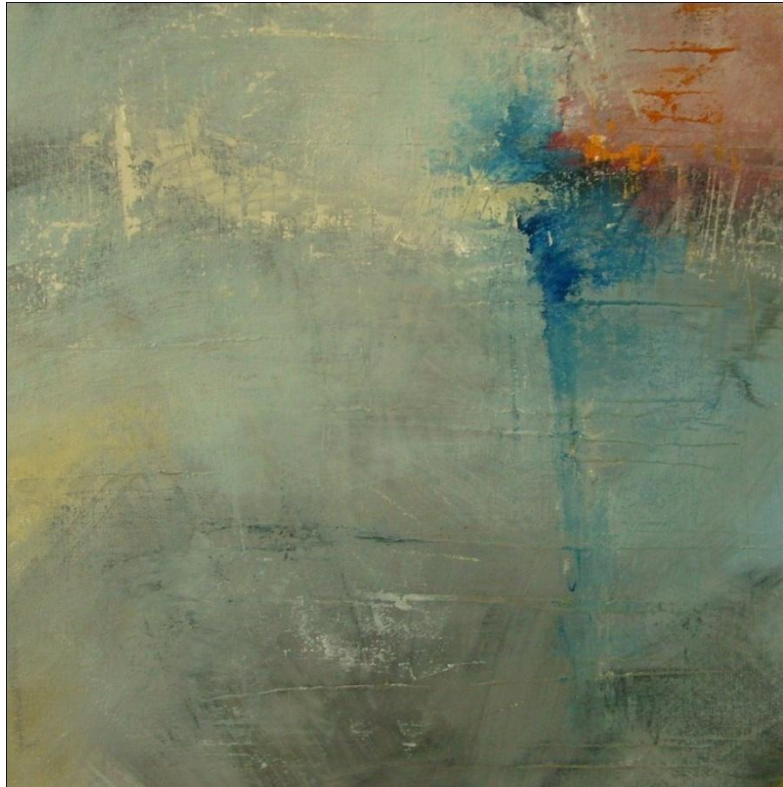


*Autumn*  
acrylic on canvas, 20" x 20"  
£400



*Coastal Breeze*  
acrylic on canvas, 20" x 20"  
£400

Front cover: *Passing the Tamarisk Hedge*, **Simon Pooley**, mixed media on board, 10" x 12", £450



*The Safety of Lights*  
acrylic on canvas, 20" x 20"  
£400

# Neil Davies



*September Walk to Hannibal's Carn*  
oil on board, 12" x 14"  
£625



*Sunset, Tide Turning*  
oil on board, 7½" x 11½"  
£450



*Driving Down to Elgol*  
oil on board, 24" x 30"  
£1250

# Gemma Pearce



*Cornish Wildflowers and Shells – St Ives*  
acrylic on canvas, 16" x 24"  
£595



*View Across to the Lizard*  
acrylic on canvas, 20" x 28"  
£650



*Cornish Anemones and View Across Mounts Bay*  
acrylic on canvas, 20" x 48"  
£850

# Terry Whybrow



*Painting 1711*  
acrylic on board, 9" x 10"  
£600



*Painting 126*  
acrylic on board, 15" x 6"  
£600





*Painting 235*  
acrylic on board, 15" x 15"  
£1300

# Simon Pooley



*West from Perranuthnoe*  
mixed media on board, 10" x 12"  
£450



*Meadow Walk to Perranuthnoe*  
mixed media on board, 10" x 12"  
£450

# Lincoln Kirby Bell



*Wall plate*  
18" diameter  
£320



*Tall Vase, Lincoln Kirby Bell, 15" tall, £290*

## On The Edge

An exhibition of recent work by six artists from West Cornwall. Please join us for a drink at our Private View on Thursday 19<sup>th</sup> May, 6pm-9pm at A&D Gallery. Art work in this brochure can be purchased from ELEVEN AND A HALF now.



## A&D Gallery

51 Chiltern St., London, W1U 6LY.

Tue-Fri 10.30am-7pm, Sat 10.30am-5.30pm

Exhibition organised by:

ELEVEN AND A HALF

Fournier Street, London, E1 6QE.

02073776144 (anytime)

02074860534 (during show)

enquiries@elevenandahalf.com

