



*Painting 142, Terry Whybrow, Acrylic on board, 9.5" x 15", £900*

## **West Cornwall Perspectives**

3<sup>rd</sup>-9<sup>th</sup> May 2010

Private View Wednesday 5<sup>th</sup> May, 6pm-9pm

ELEVEN AND A HALF at 54 The Gallery, Shepherd Market, Mayfair, London, W1J 7QX



*Table Top With Two Blue Chairs*

**Brenda King**

Oil on canvas, 8" x 8", £500



*Sunday's Sun*

**Jason Lilley**

Oil on board, 18" x 18", £895





*Coast*

**John Piper**

Oil on board, 24" x 12", £850



*The Inner Harbour*

**Michael Praed**

Oil on board, 23" x 14", £550



*Newlyn Old Harbour*

**Neil Pinkett**

Oil on board, 24" x 16", £1950



*A Wild Winter's Day at Perranporth*

**Neil Davies**

Oil on canvas, 40" x 50", £2750



*Calm Grey*

**Ben Catt**

Mixed media on board, 20" x 12", £390

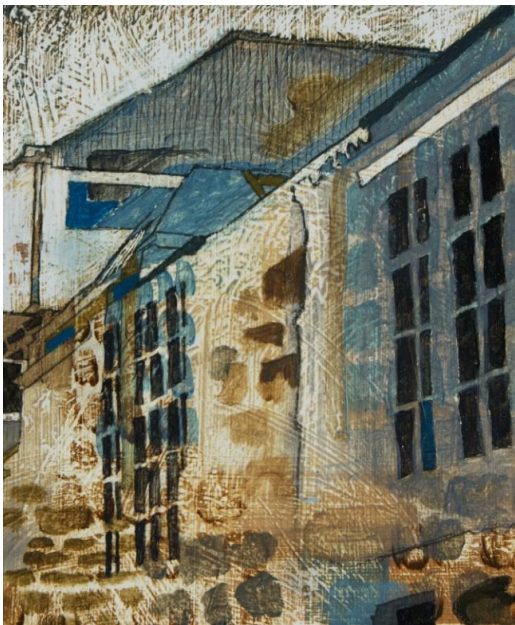


*December Colour*  
**Brenda King**  
Oil on canvas, 12" x 12", £700



*Newlyn Harbour Old Quay*  
**Neil Pinkett**  
Oil on board, 16" x 20", £1790





*Oil and Water II*  
**Jason Lilley**  
Oil on board, 6" x 5", £395



*Calm Still*  
**Ben Catt**  
Mixed media on board, 20" x 20", £495



*St Ives Rooftops*  
**Gary Long**  
Oil, 24" x 24", £1500



*Moorland Hamlet*  
**John Piper**  
Oil on canvas, 30" x 40", £3000



*Quality Street*

**Jason Lilley**

Oil on board, 17" x 41", £2850



*Low Spring Tide, Whitesand Bay, Sennen*

**Michael Praed**

Oil on board, 24" x 48", £2750

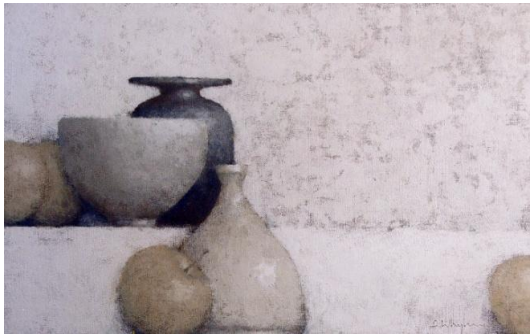


*Beacon Road*

**Ben Catt**

Mixed media on board, 20" x 12", £390





*Painting 282*

**Terry Whybrow**

Acrylic on board, 9½" x 15", £900



*Wave, St Loy's Cove*

**Gary Long**

Oil, 20" x 30", £1000



*Penzance Promenade Wind and Sun*

**Neil Pinkett**

Oil on board, 15" x 24", £1950



*Bracing Winter Walk Round Treen*

**Neil Davies**

Oil on board, 24" x 30", £1250



*Tulips By The Sea*

**Brenda King**

Oil on board, 12" x 12", £700



*Storm Blowing In Over The Headland*

**Neil Davies**

Oil on canvas, 40" x 50", £2750



*Penwith Hillside*

**Gary Long**

Oil, 12" x 12", £450



*Painting 252*

**Terry Whybrow**

Acrylic on board, 9½" x 15", £900



*Hull Shapes, Mullion*

**Michael Praed**

Oil on board, 12" x 16", £425





*Summer Coast*, John Piper Oil on canvas, 32" x 32", £2500

Please join us for a drink at our Private View on Wednesday 5<sup>th</sup> May, 2010, 6pm-9pm at 54 The Gallery, Shepherd Market, Mayfair, London.

Paintings in this brochure can be purchased now - please contact ELEVEN AND A HALF for details. The entire exhibition can be viewed one week in advance of the show on our website: [www.elevenandahalf.com](http://www.elevenandahalf.com).



54 The Gallery

Shepherd Market, London, W1J 7QX

Tube: Green Park (5 mins walk), Bond St (10 mins walk)

9.30am-6.30pm Monday-Saturday; 10am-4pm Sunday

Exhibition organised by:

ELEVEN AND A HALF

Fournier Street

London E1 6QE

02073776144 (anytime)

02074917322 (during show only)

email: [enquiries@elevenandahalf.com](mailto:enquiries@elevenandahalf.com)